

Outdoor stand construction packages



Your perfect appearance in the outdoor exhibition area – simple, unique, impressive!

In a year full of industry events, we make it easy for you to design your **outdoor presence at RATL** to be not only functional but also **effective**. Choose from **four modular stand construction options** and create **your perfect home base in the open air** – whether as a clever storage solution, classic pagoda tent, stylish event container or trendy tiny space. This allows you to welcome your customers at any time, weatherproof and in the best atmosphere for intensive discussions. **Which stand variant is right for you?**

Your options for outdoor stand construction

Get in touch – I will be happy to help you!



Sonja Carl
Exhibitor Service Manager
+49 721 3720 5176
service@ratl-messe.com



Event containers

Variant 1

Solo Basic

- Container approx. 6 x 3 m
- 20 kW three-phase connection
- Electric power consumption (lump-sum)
- Grounding of the container

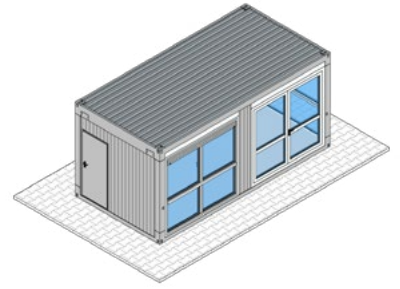
→ € 2,990

Solo Comfort

Services as in basic package with additional:

- 1x counter USM
- 1x high table set Combo
- 1x bar stool Stack Maxi
- 1x flag mast incl. anchorage (no illustration)

→ € 3,730



Variant 2

Double Basic

- Container combination approx. 6 x 6 m
- 20 kW three-phase connection
- Electric power consumption (lump-sum)
- Grounding of the container

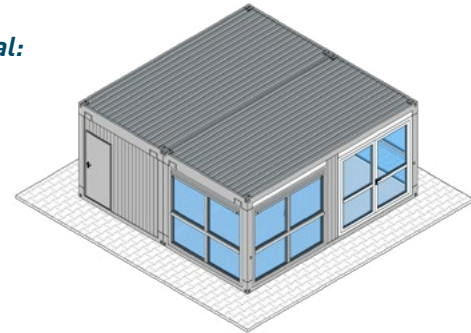
→ € 5,990

Double Comfort

Services as in basic package with additional:

- 1x counter USM
- 1x high table set Combo
- 1x bar stool Stack Maxi
- 1x armchair Ascot
- 1x bench Ascot
- 1x sofa table Toe black slate look
- 1x flag mast incl. anchorage (no illustration)

→ € 7,230



Variant 3

Solo plus Terrace Container Basic

- Container combination approx. 6 x 6 m
- 20 kW three-phase connection
- Electric power consumption (lump-sum)
- Grounding of the container

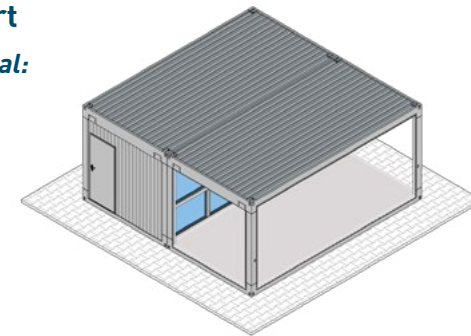
→ € 5,390

Solo plus Terrace Container Comfort

Services as in basic package with additional:

- 1x counter USM
- 1x high table set Combo
- 1x bar stool Stack Maxi
- 1x outdoor seating set DSR black (no illustration)
- 1x flag mast incl. anchorage (no illustration)

→ € 6,290



ADD-ON variant 2 & 3

Double roof terrace

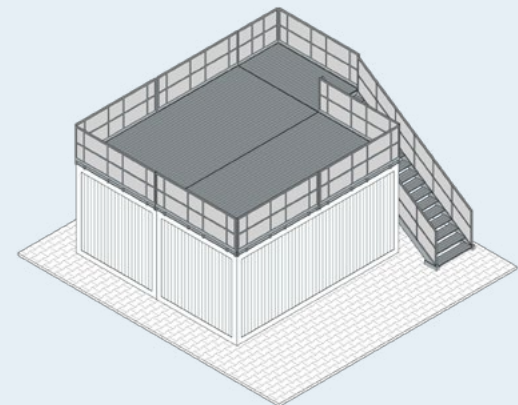
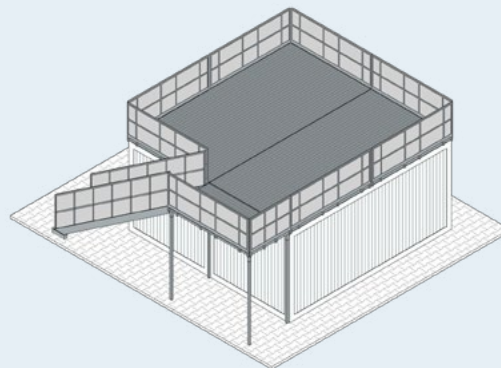
- Terrace on two containers

Variant 2 + roof terrace:

→ € 11,540

Variant 3 + roof terrace:

→ € 10,940



Solo plus Roof Terrace Basic

- Container approx. 6 x 3 m with terrace
- 20 kW three-phase connection
- Electric power consumption (lump-sum)
- Grounding of the container

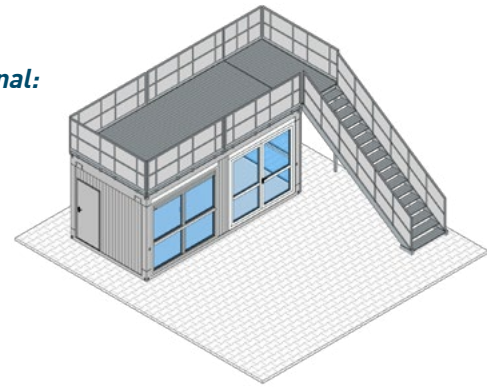
→ € 5,990

Solo plus Roof Terrace Comfort

Services as in basic package with additional:

- 1x counter USM
- 1x high table set Combo
- 1x bar stool Stack Maxi
- 1x outdoor seating set DSR black (no illustration)
- 1x flag mast incl. anchorage (no illustration)

→ € 6,890



Double Storey plus Roof Terrace Basic

- Container combination approx. 6 x 6 m with terrace
- 20 kW three-phase connection
- Electric power consumption (lump-sum)
- Grounding of the container

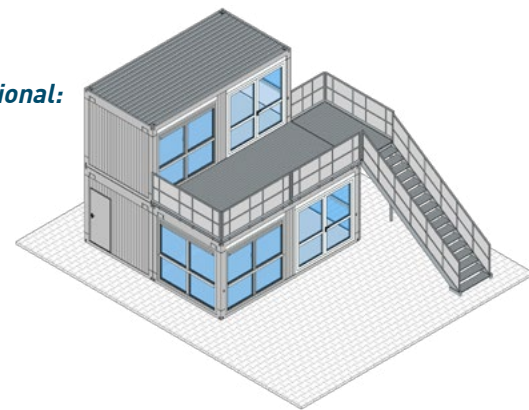
→ € 10,990

Double Storey plus Roof Terrace Comfort

Services as in basic package with additional:

- 1x counter USM
- 2x high table set Combo
- 1x bar stool Stack Maxi
- 1x armchair Ascot
- 1x bench Ascot
- 1x sofa table Toe black slate look
- 1x outdoor seating set DSR black (no illustration)
- 1x flag mast incl. anchorage (no illustration)

→ € 12,510



Counter USM



High table set



Bar stool Stack Maxi



Armchair Ascot



Bench Ascot



Sofa table Toe black slate look

Pagoda tents

Pagoda Basic

- Pagoda tent 5 x 5 m with a window sheet
- Wood flooring
- Tent insurance
- Fire extinguisher
- Power connection with 230 V / 3 kW incl. electric power consumption (lump-sum)

→ € 1,000



Pagoda Comfort

Services as in basic package with additional:

- 2x flag mast incl. anchorage
- Sideboard
- Brochure stand Simona
- High table white
- 2x bar stool Swing black

→ € 1,900



Tiny-Space

A stylish space for quiet conversations, can either be integrated into an existing outdoor stand concept or stand-alone as a home base

- Dimensions: 7 x 3 m surface area, 4 m high
- Space for up to 5 people seated
- Soundproofed, air-conditioned and equipped to a high standard
- 27-inch monitor: digital performances can be transferred via Bluetooth connection or USB stick
- Whiteboard
- Designer furniture
- Router (internet must be ordered via Messe Karlsruhe)
- Power requirement: 3 kW connection (power must be ordered via Messe Karlsruhe)
- Individual branding options

→ Price upon request



Messe Karlsruhe will establish contact with the supplier.



Room and storage containers

Various simple room and storage containers are available in the Online Service Centre.

For example:

- Room module with vestibule
- Dimensions: 6 x 2.5 m
- Power connection with 20 kW incl. electric power consumption (lump-sum)

→ € 1,850

